

MASSACHUSETTS



OTP TTA CENTER

Opioid Treatment Program
Training & Technical Assistance Center



**Cultivating Strategic Partnerships in
Long-Term Care:
Innovative, Evidence-Based Interventions for
Opioid Use Disorder and Medication for
Opioid Use Disorder
in an Aging Population**

April 1st, 3:00-4:00 pm



Presenters



Michael Brassard, BA
Regional Director of
Operations at BayMark
Health Services



Stephanie Baker, MHA, CPHQ
Quality Improvement Manager at
Healthcentric Advisors

Session Objectives

By the end of this session, participants will be able to:

- 1** Describe how Long-Term Care (LTC) facilities and Opioid Treatment Programs (OTP) can collaborate to improve care for residents with Opioid Use Disorder (OUD), including key culture shifts needed to support partnership and reduce stigma.
- 2** Identify the shared benefits of cross-sector collaboration for residents, clinical teams, and organizations, using real-world success stories to illustrate effective models in practice.
- 3** Explore future opportunities to strengthen and sustain partnerships between LTC and OTPs, including strategies for scaling collaboration and embedding it into routine care delivery.

Substance Use Disorder in Long Term Care Project Overview

Improve the quality of care for residents with substance use disorders (SUD) across long-term care settings by engaging administrators, providers, nurses, and facility employees to better understand and treat residents with SUD via:

On-site training

Regional forums

**Quarterly
webinars**

**Educational
Resources**

Why the Focus on Long-Term Care?

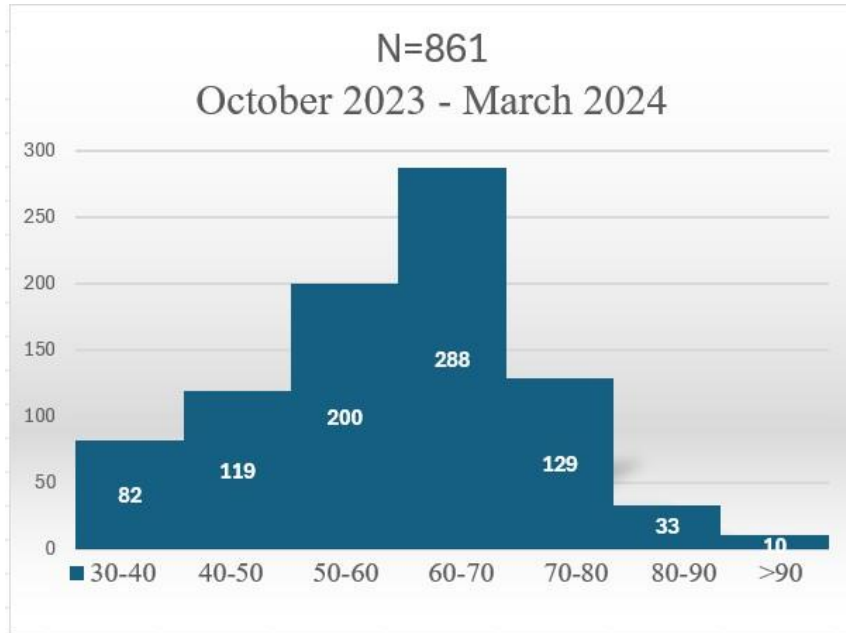


Substance Use Disorder

- Historically, older adults have not had high rates of drug use
- Numbers expected and have continued to increase
- 2 sub-cohorts:
 - Existing history of SUD
 - Newly diagnosed, driven by later-life events



LTC Residents With OUD by Age



- 23% of residents were between the ages of 30 and 50
- 23% of residents were between 50 and 60 years old
- Almost half of the residents were under 60 years old

Urgency to Understand OUD Diagnosis

Lack of attention due to societal perceptions about who is at risk.

- Older adults and adults with long-term disabilities are perceived as lower risk, despite growing evidence showing otherwise.

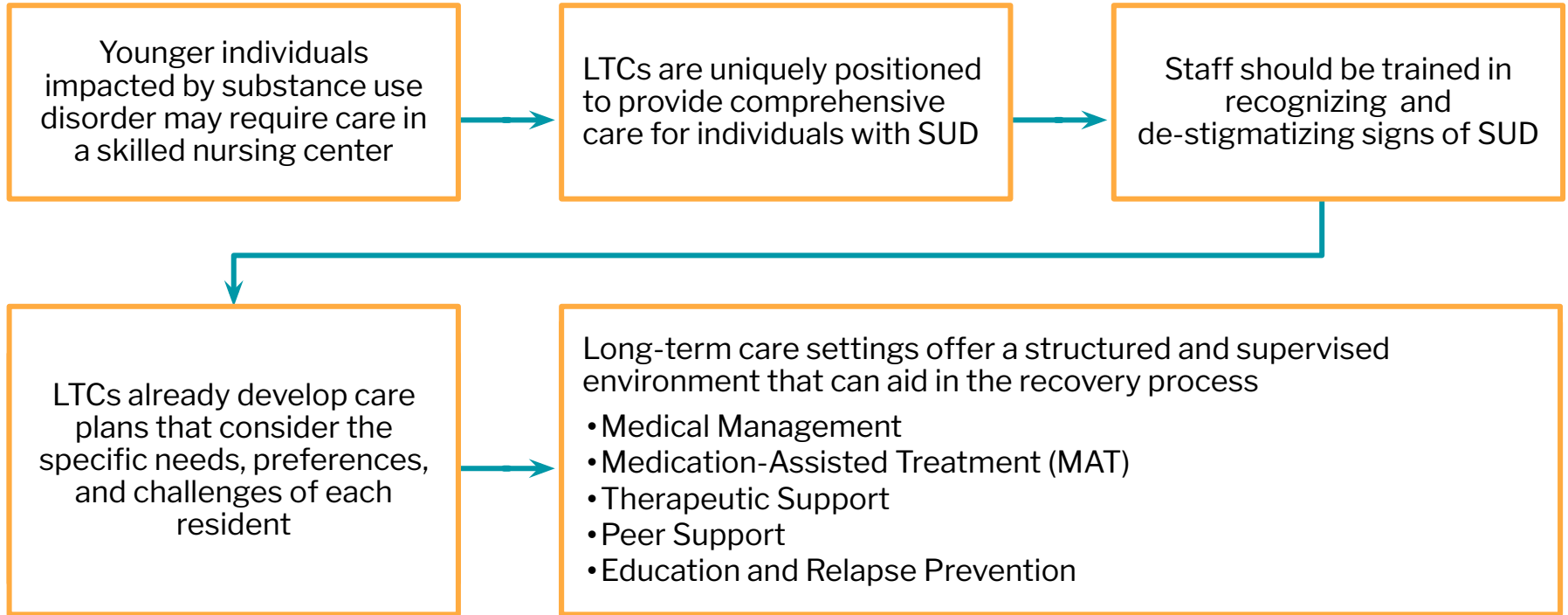
High rates of polypharmacy in LTC population.

- Increased risk of overdose.

More than one-quarter (25.8%) of hospitalized Medicare beneficiaries with OUD received post-acute care in a setting other than home.

- Most (70.3%) went home without services
- 15.8 % to SNF (skilled nursing facility) (n=72,595)
- 9.6 % to non-SNF settings (n=44,077)
- Older, female, non-Hispanic white

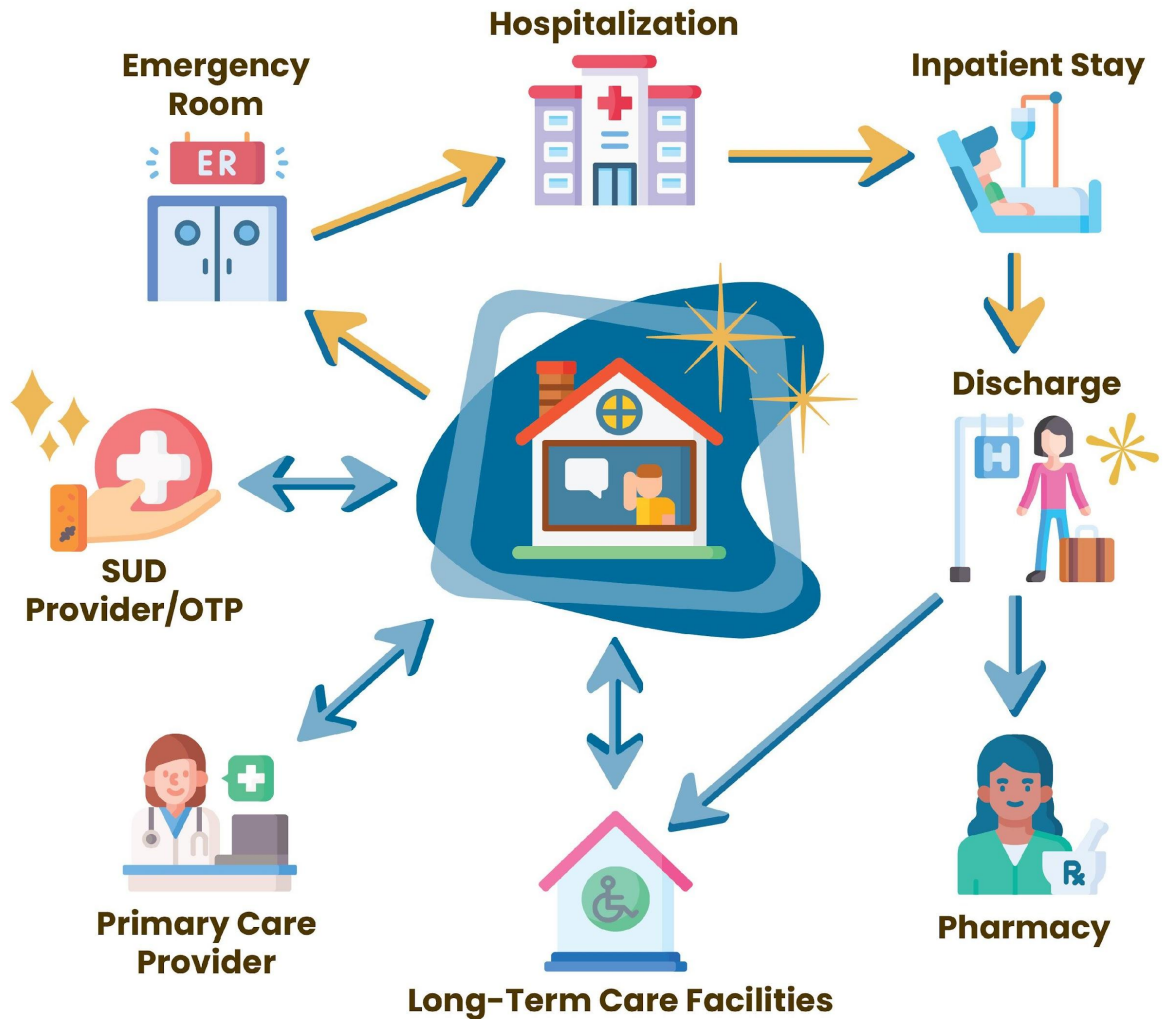
Growing Need for Treatment in LTC



Approach to SUD in Long-Term Care



Collaborative Approach



Approach to Treatment in LTC

1

Coordinating MOUD induction and maintenance for residents transitioning from hospitals, correctional facilities, or community settings.

2

Training LTC staff on recognizing opioid withdrawal and understanding the benefits of MOUD.

3

Establishing dispensing, storage, and monitoring procedures for methadone that comply with state and federal guidelines.

Culture Change for LTC Facilities

When it's not dementia, and it is **SUD**

- More assessments
- LTC focused on dementia, now a shift in care
- Skill set for clinicians
- Often focus on the Mental Health diagnosis, not the SUD diagnosis



Culture Change for OTPs

- Training for LTC facilities
- Stigma and Bias
- Shifts in how you are providing medications
- Understanding the LTC facilities structure



Ways OTPs and OBATs Can Help



Engage Facilities in Education



Address Stigma



Assist with Screening for OUD



Educate on Storage




Develop a Transportation Plan



Provide Therapy

Enhancing Provider Training

- Given the limited experience many LTC clinicians have in managing OUD, particularly at the intersection of gerontology and addiction, OTPs can enhance provider capacity.
 - Efforts could include:
 - Delivering education on harm reduction strategies, the clinical benefits of MOUD, and management of co-occurring conditions.
 - Offering telehealth consultation services with addiction medicine specialists (Massachusetts Department of Public Health, 2023).
 - Providing technical assistance to LTC leadership on regulatory compliance and best practices.
- 

Opioid Treatment Program Partnerships



Why Partnership with LTC is Important

Return on Investment

- Medicaid payment incentives
- Increase in client base
- Aging patient population in need of more structured care
- Younger patients who need a post-acute level of care after a stay in the hospital



Provider Story

35-year-old overdose

Non-verbal and non-ambulatory

Admission

Long-term care for IV antibiotics and physical therapy

Process Change

On-site medical visits

On-site counseling

Outcomes

Clinical stabilization (over one year)

Regained speech and mobility

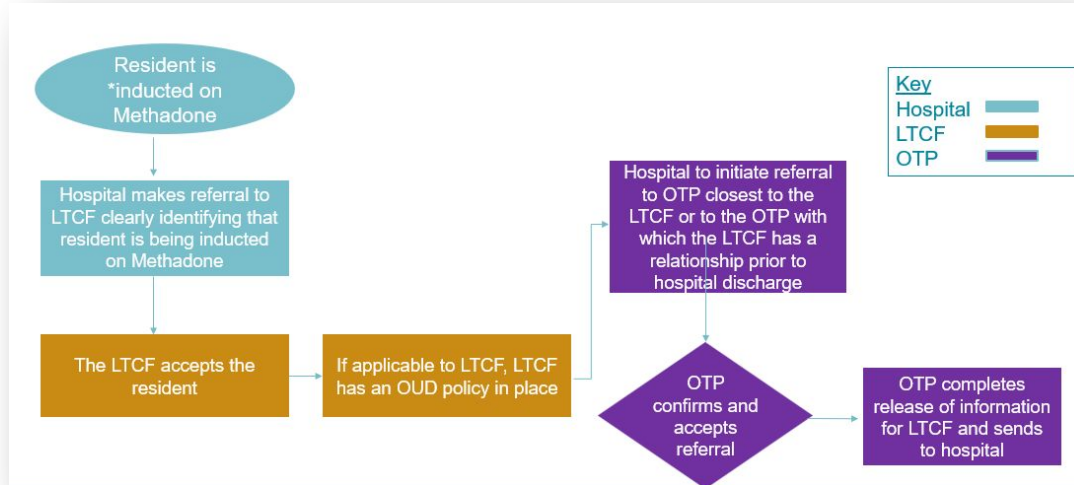
Transitioned to home

Supported by VNA, telehealth, and in-person visits



Develop a Process

Transitions of Care Process Flow

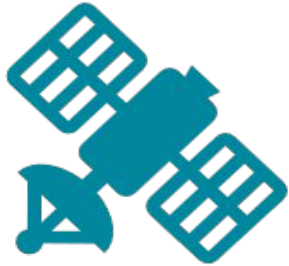


- Qualified Services Organization Agreement (QSOA)
- Release of Information (ROI)
- Determine how the methadone will be dispensed to the resident
- Education Plan
- Transitions of Care Plan
- Patient Care Plan

Reshaping the Future of LTC



Reshaping the Future



Satellite OTPs



Mobile Units



**Medication Units
in LTCFs**

Virtual Treatment Options

Ongoing support can be completed virtually

- Virtual Intake Screeners
- Mutual Support Groups- Alcohol Use Disorder and OUD
- Virtual case meetings with the LTC Facilities team
- Ongoing therapy – telehealth options




Open Discussion



Acknowledgement

Funding for the **Substance Use Disorders (SUD) in Long-Term Care (LTC) Project** is made possible by the support of the Office of Health Care Strategy and Planning and the Bureau of Substance Addiction Services at the Massachusetts Department of Public Health, funded through the State Opioid Response (SOR) grant from the Substance Abuse and Mental Health Services Administration (SAMHSA).



Upcoming Regional Forums

Metro South Region (TBD)

May 14th

Public Library in Canton

Upper and Lower North Shore

June 18th, 1pm - 4pm

Senior Care Inc. in Gloucester

Lower Central Massachusetts

August 19th, 9am - 12pm

Elder Services in Worcester

Spanish Speaking Forum

October 22nd

AgeSpan in Lawrence



<https://redcap.link/RegionalForumsSUDinLTC>

Share Your Story



Join us in our mission to promote health and well-being for those living with substance use disorders in nursing home care.

You're invited to help us tell the story.

We're partnering with national nonprofit **StoryCorps** to record, uplift, and archive our community's stories, to document the narrative surrounding people living with Substance Use Disorders.

To sign up, fill out this form: <https://redcap.link/StoryCorps>

Contact Us

Website: www.SUDinLTC.com

Email: SUDinLTC@healthcentricadvisors.org



Thank you!

Questions?

